


What's New in HCL RTist 11.3

updated for release 2022.48

Overview

- ▶ RTist 11.3 is based on Eclipse 2022.06 (4.24)
- ▶ HCL RTist is 100% compatible with IBM RSARTE and all features in these two products are equivalent.

 HCL RTist
*** EXPERIMENTAL ***
Version: 11.3.0.v20221128_2358
Release: 2022.48

(c) Copyright IBM Corporation 2004, 2016. All rights reserved.
(c) Copyright HCL Technologies Ltd. 2016, 2022. All rights reserved.
Visit <https://RTist.hcldoc.com/help/topic/com.ibm.xttools.rsarte.webdoc/users-guide/overview.html>

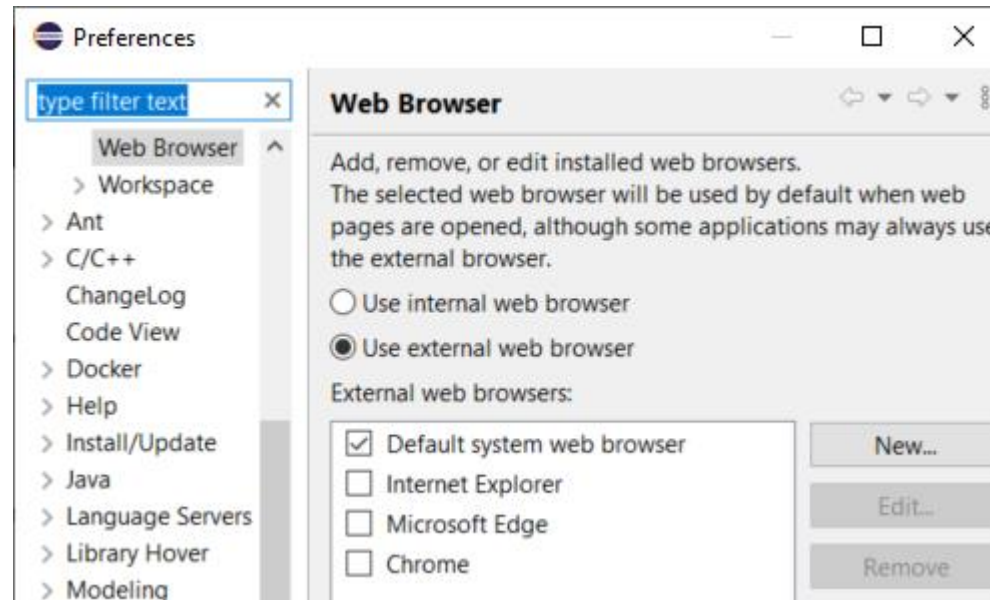


Eclipse 4.24 (2022.06)

- ▶ Compared to RTist 11.2, RTist 11.3 includes new features and bug fixes from 4 quarterly Eclipse releases:
 - 2021.09 (<https://www.eclipse.org/eclipse/news/4.21/platform.php>)
 - 2021.12 (<https://www.eclipse.org/eclipse/news/4.22/platform.php>)
 - 2022.03 (<https://www.eclipse.org/eclipse/news/4.23/platform.php>)
 - 2022.06 (<https://www.eclipse.org/eclipse/news/4.24/platform.php>)
- ▶ For full information about all improvements and changes in these Eclipse releases see the links above
 - Some highlights are listed in the next few slides...

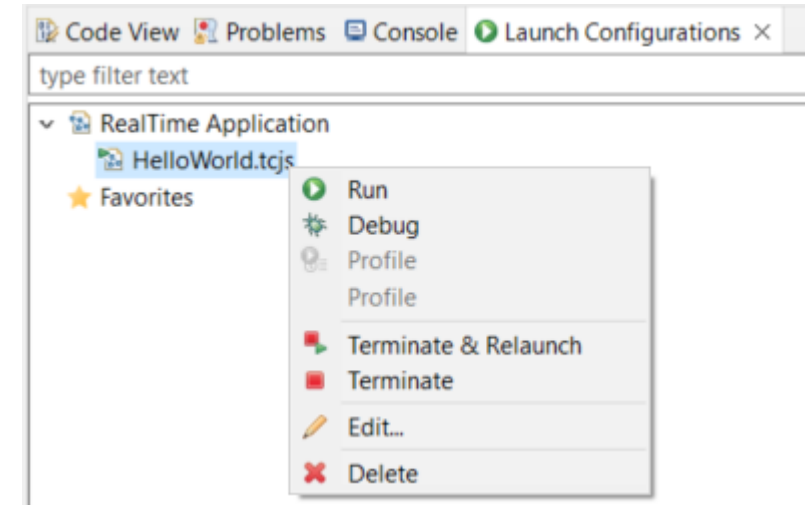
Eclipse 4.24 (2022.06)

- ▶ Eclipse now by default uses the external web browser
 - The internal web browser has limitations and cannot show all web pages correctly
 - Usage of the external web browser is therefore recommended, and having it as the default makes it easier to get started with RTist without having to configure the preferences in **General - Web Browser**.



Eclipse 4.24 (2022.06)

- ▶ A new Launch Configuration View makes it easier to, for example, launch model or C++ debug sessions
 - No need to first open the modal Launch Configuration dialog
 - Launch configurations will appear in the view automatically as they are created
 - Commonly useful commands for launching, terminating etc are available in the context menu
 - To start a model debug session, just double-click a "TC launch configuration" in that view



Eclipse 4.24 (2022.06)

▶ Multiple text selections

- You can now have multiple cursors in a text editor and make multiple selections
- Add a new cursor by **Alt+click**
- Multiple cursors can be useful when making the same change in multiple places in a file ("interactive find/replace")
- Several new text editor commands are available for working with multiple text selections
 - For example: **Multi selection up/down relative to anchor selection** (for creating a multi-selection from a selected word)
 - Note: You need to assign a key binding to these commands to use them! Use the preference page **General - Keys** and search for commands with "multi" in their name in the "Text Editing" category.

```
Showing code from the file Initial
48 log.log("Getting indices");
49 long int i1 = getIndex1();
50 long int i2 = getIndex2();
51 long int i3 = getIndex3();
52 context()->abort();
53
```

```
Showing code from the file Initial
48 log.log("Getting indices");
49 int i1 = getIndex1();
50 int i2 = getIndex2();
51 int i3 = getIndex3();
52 context()->abort();
--
```

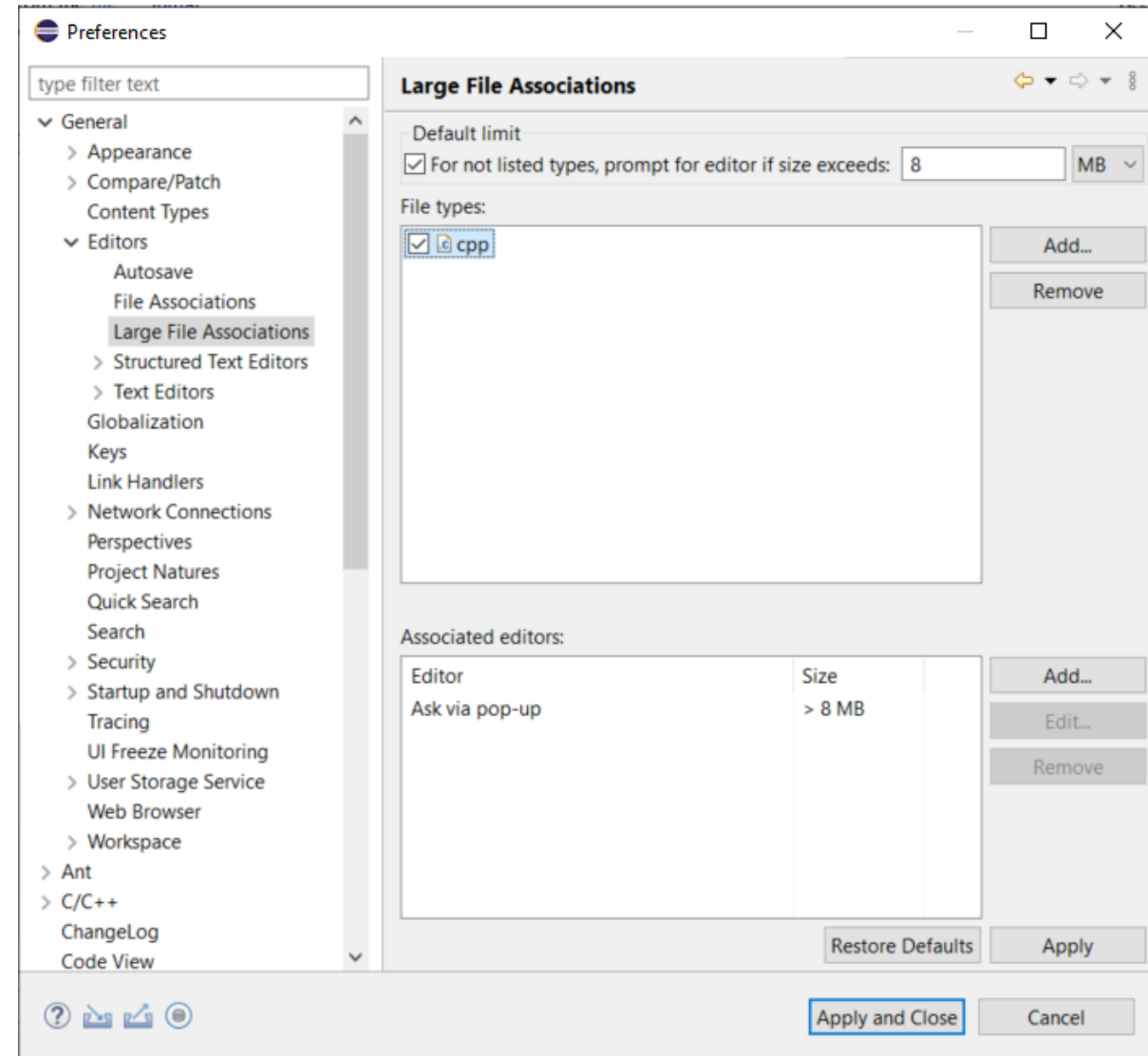
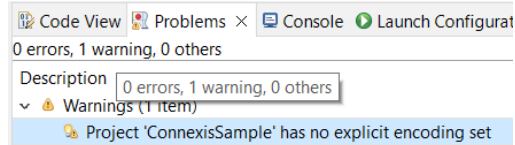
Eclipse 4.24 (2022.06)

▶ Large file associations

- A new preference page allows to specify special editors to use for large files: **General - Editors - Large File Associations**
- Can help keeping a good performance in Eclipse even when opening large files

▶ Project encodings

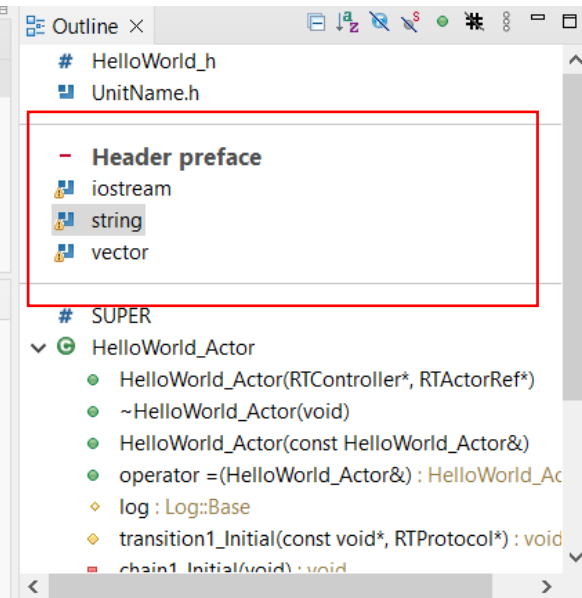
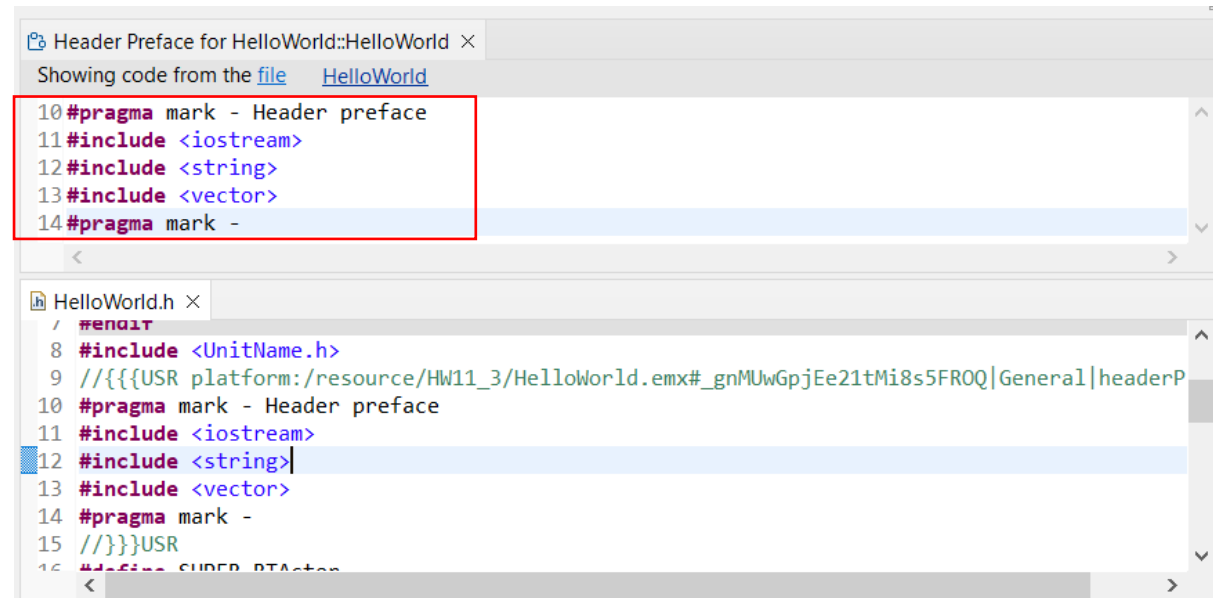
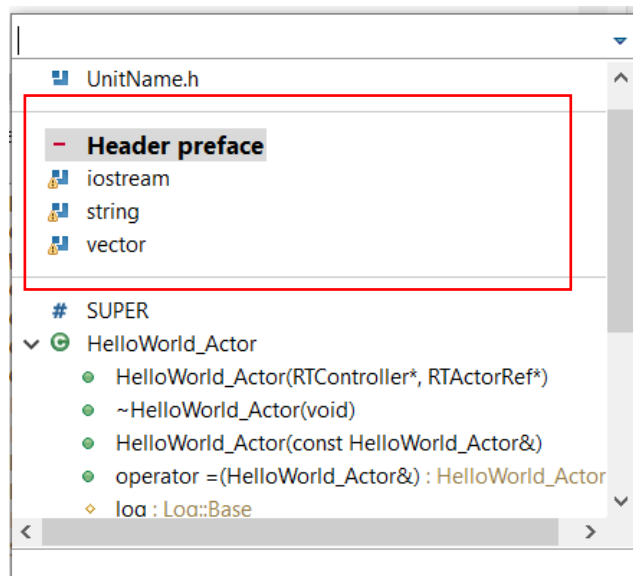
- Projects will now automatically get its encoding set to the workspace encoding (by default UTF-8) when they are created
- For projects created in earlier versions of Eclipse a warning will appear
- A Quick Fix is available for setting the project encoding to the workspace encoding



CDT 10.7 (included as part of Eclipse 2022.06)

▶ Separator lines in the Outline view

- `#pragma mark` and `#pragma region` can be used for showing separator lines in the Outline view
- Can help to more easily see and navigate to user code snippets in a generated C++ file
- Automatically generating such separator lines for certain code snippets could be a future possibility...



CDT 10.7 (included as part of Eclipse 2022.06)

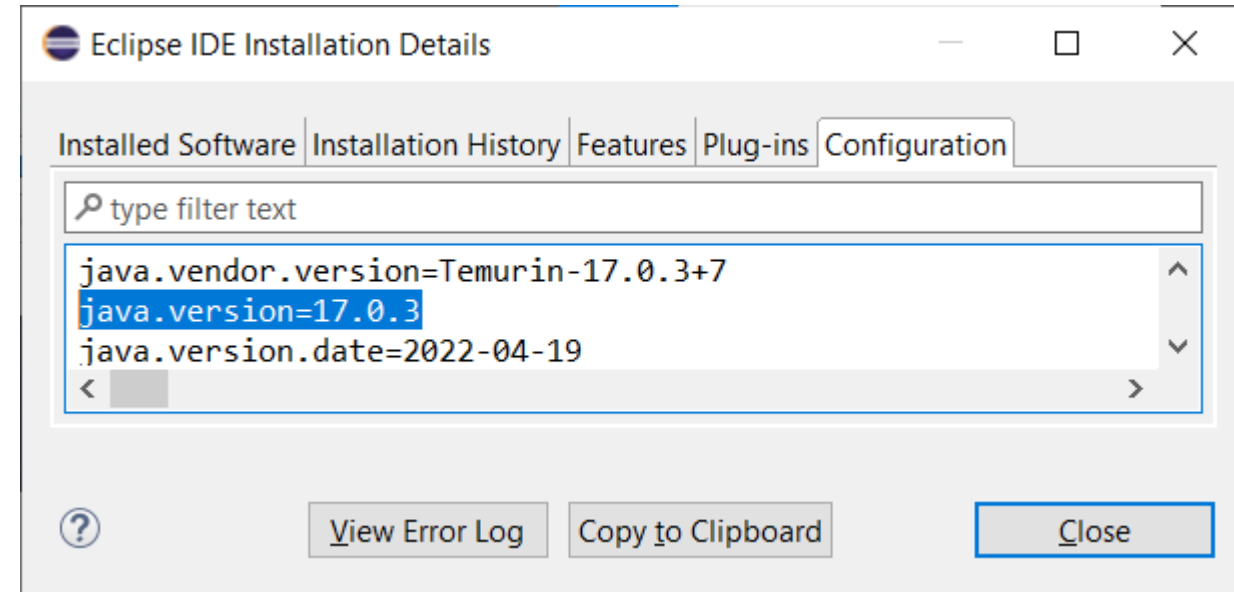
- ▶ Improved code analysis for constexpr expressions
 - A number of GCC/Clang built-in functions can now be used without confusing the Code Analysis feature
- ▶ For more information about CDT improvements see
 - <https://wiki.eclipse.org/CDT/User/NewIn104>
 - <https://wiki.eclipse.org/CDT/User/NewIn105>
 - <https://wiki.eclipse.org/CDT/User/NewIn106>
 - <https://wiki.eclipse.org/CDT/User/NewIn107>

Newer EGit Version in the EGit Integration

- ▶ The EGit integration in RTist has upgraded EGit from 5.12 to 6.2
 - This is the recommended and latest version for Eclipse 2022.06
- ▶ This upgrade provides several new features and bug fixes
 - For detailed information about the changes see
 - https://wiki.eclipse.org/EGit/New_and_Noteworthy/5.13
 - https://wiki.eclipse.org/EGit/New_and_Noteworthy/6.0
 - https://wiki.eclipse.org/EGit/New_and_Noteworthy/6.1
 - https://wiki.eclipse.org/EGit/New_and_Noteworthy/6.2

Java 17

- ▶ RTist now should be run with a Java 17 JVM
 - Eclipse 2022.06 includes a Java 17 JVM which can be used. It's hence no longer necessary to update `eclipse.ini` to specify a different JVM for running RTist.
 - Refer to the System Requirements for more details
- ▶ Rebuild your plugins
 - If you have your own Eclipse plugins it's recommended to rebuild them with a Java 17 compiler before running them together with RTist 11.3.



HCL

*Relationship*TM
BEYOND THE CONTRACT

\$7 BILLION ENTERPRISE | 110,000 IDEAPRENEURS | 31 COUNTRIES



WATCH THE FILM