

Business Intelligence and Reporting Tools

---

## **BIRT Installation Instructions 11.1**

# 1 Introduction

This document guides you through the installation of [Business Intelligence and Reporting Tools \(BIRT\)](#).

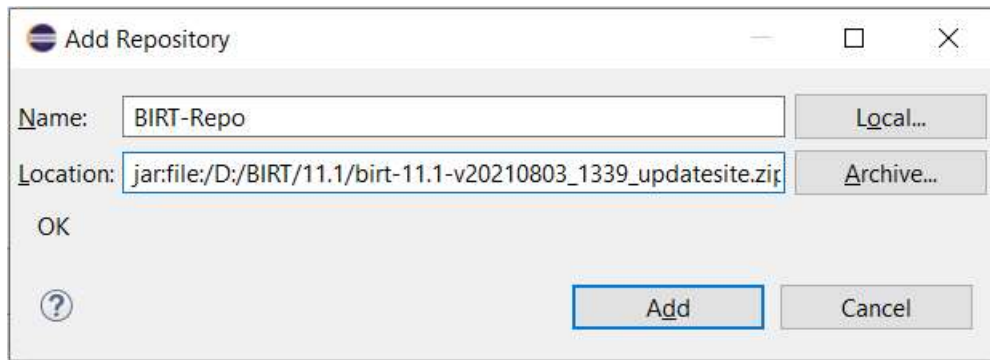
To follow the instructions in this document and successfully install BIRT you will need the following:

- An installation of HCL RTist 11.1 or IBM RSARTE 11.1.
- During BIRT installation [RTist](#) or [RSARTE](#) must be run with Java 11. Please refer to the Introduction chapter of the installation instructions document for further instructions on how to configure Java version.
- Access to a repository containing the BIRT update site. This can either be a locally downloaded zip file or the address of a shared repository that has been preconfigured for your usage.

## 2 Installation

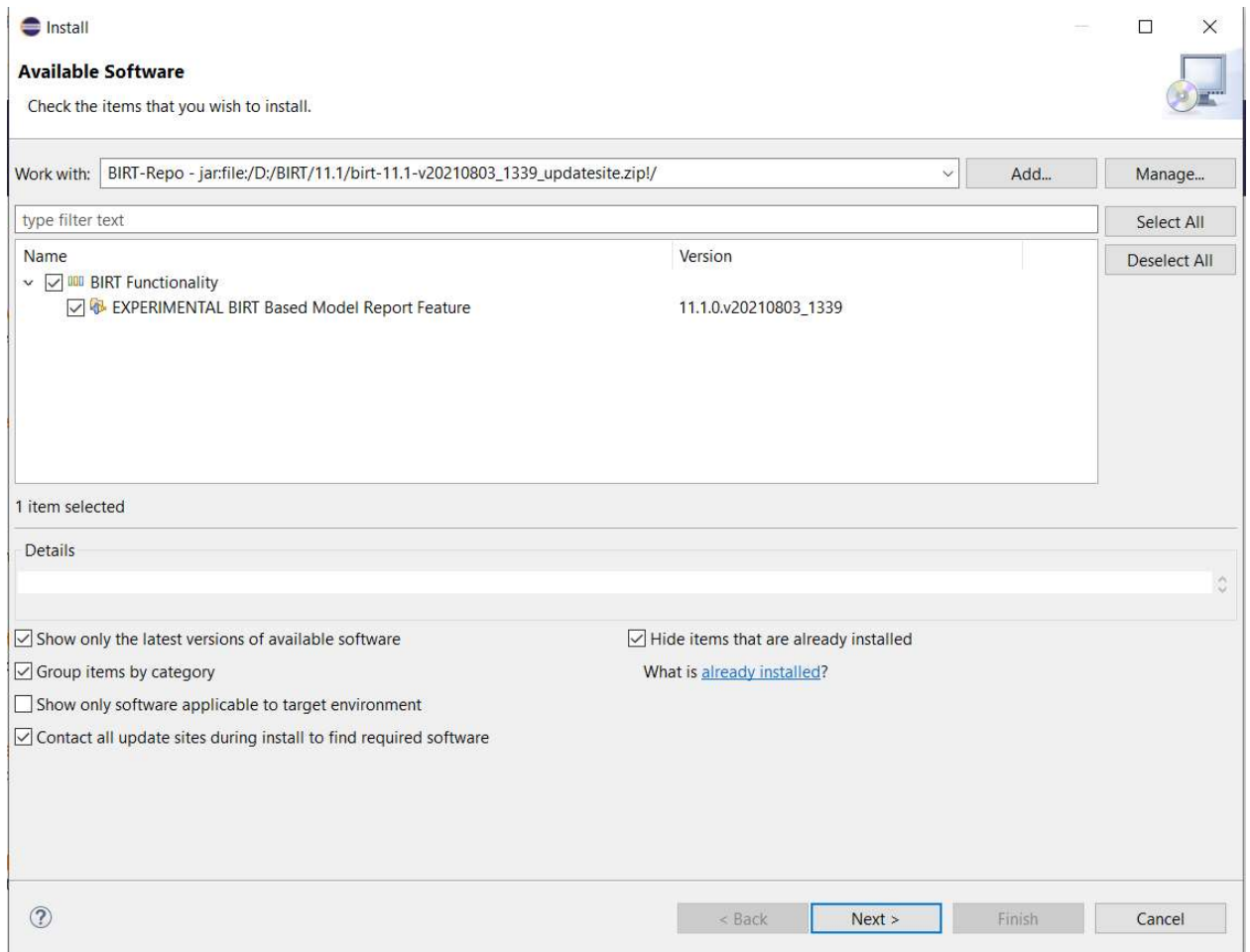
**NOTE:** To install BIRT you must have permissions to write the files to the installation directory of RSARTE 11.1 / RTist 11.1.

1. Start RSARTE / RTist.
2. Choose the **Install New Software...** command from the Help menu.
3. Press the **Add...** button and enter the location of the BIRT update site. If the update site is located on a server, you can directly type its URL in the Location field. If instead, you have it as a zip file in the file system, press the **Archive...** button and select it. If the .zip file already was unpacked to a folder, you should instead use the **Local...** button and select the folder. You can give a meaningful name to the repository in case you want to install from it again in the future. For example:



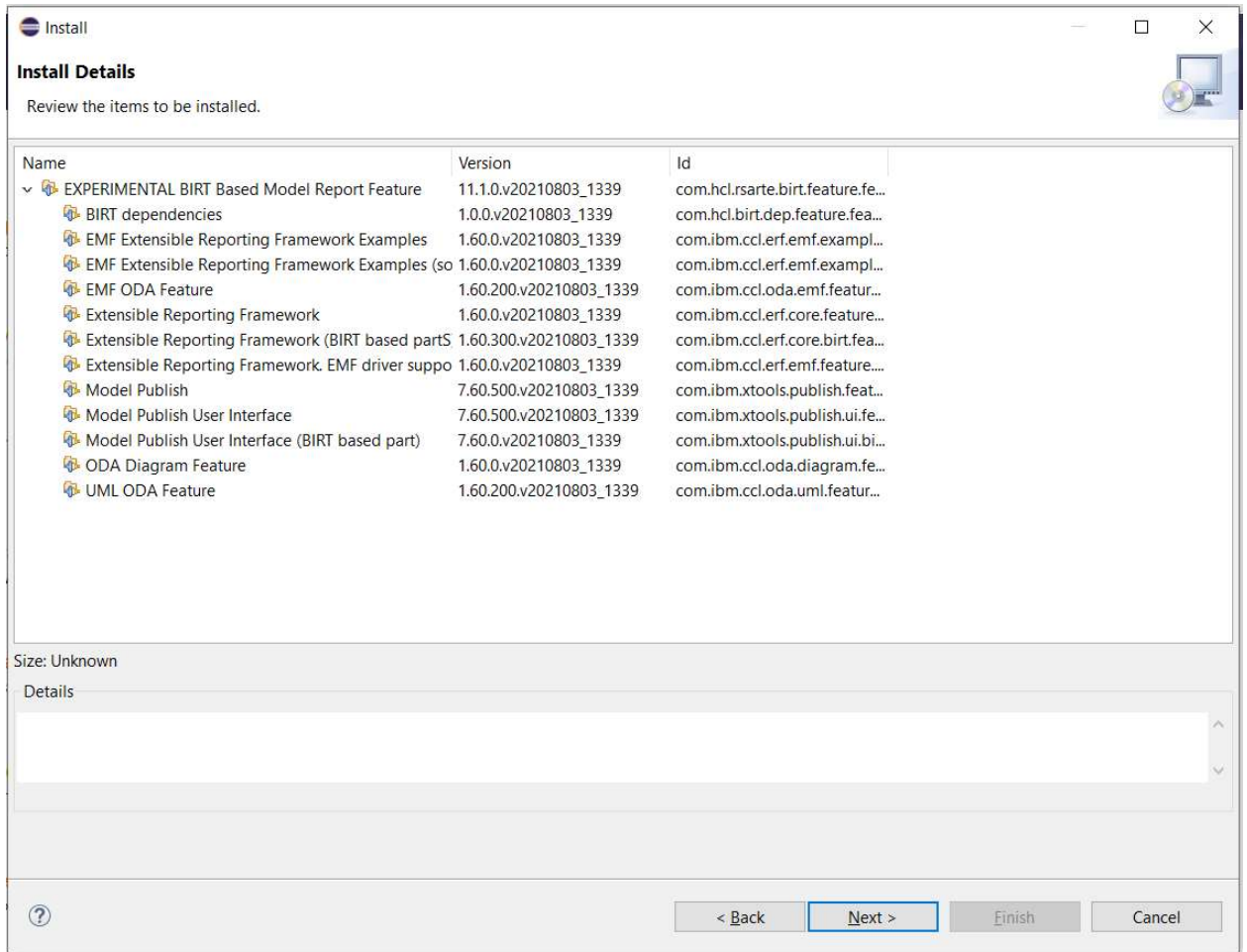
The BIRT update site zip file that you should install should have a name "birt-11.1-\*\_updatesite.zip".

4. Select **BIRT Functionality** in the list . Press **Next**.

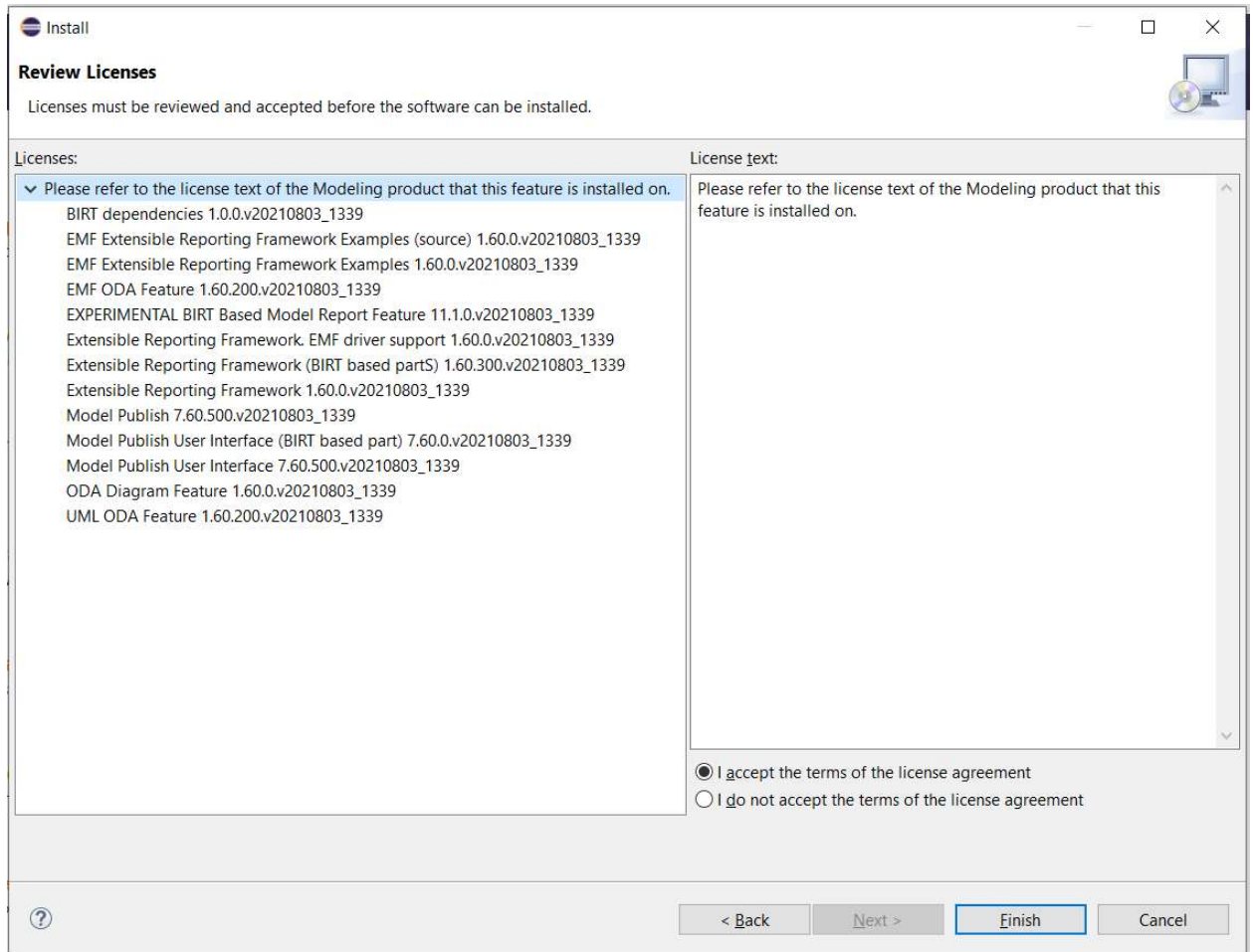


5. You can review the BIRT selections, before you proceed, in **Install Details** step of the wizard. Press **Next**.

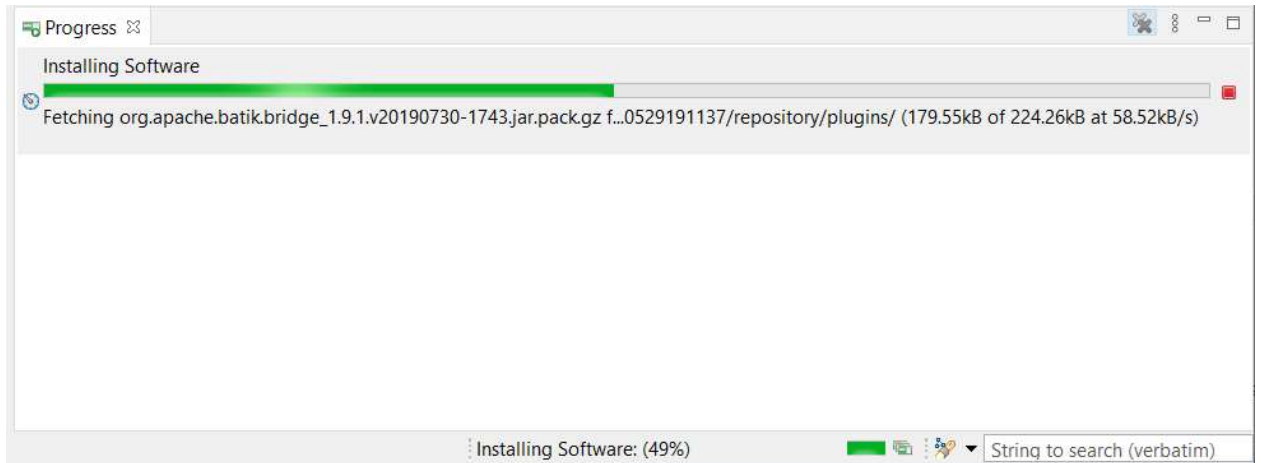
**NOTE:** If you get errors at this step double check that you run with sufficient privileges to be able to make updates to the system and files. On Windows you may need to start RSARTE / RTist using the “Run as Administrator” command and on Linux with root rights.



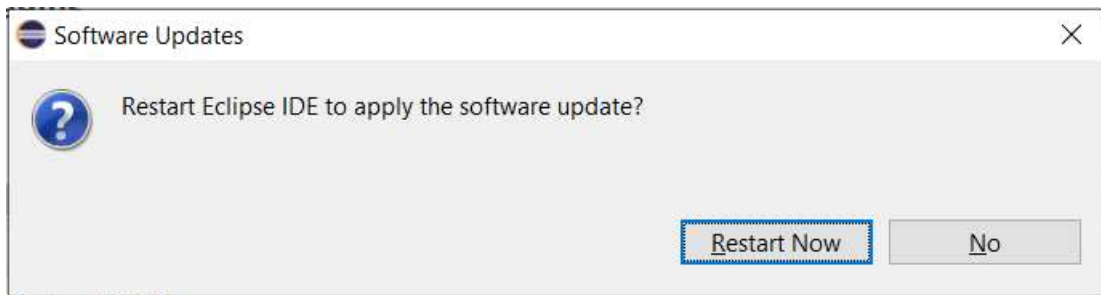
6. Finally **Review Licenses** page will be shown. If you accept the license agreements, click the appropriate radio button, and then **Finish**.



7. The Installation will now start. This can take few minutes depending on the system, you can check the progress in the **status bar** or in the **Progress view**.



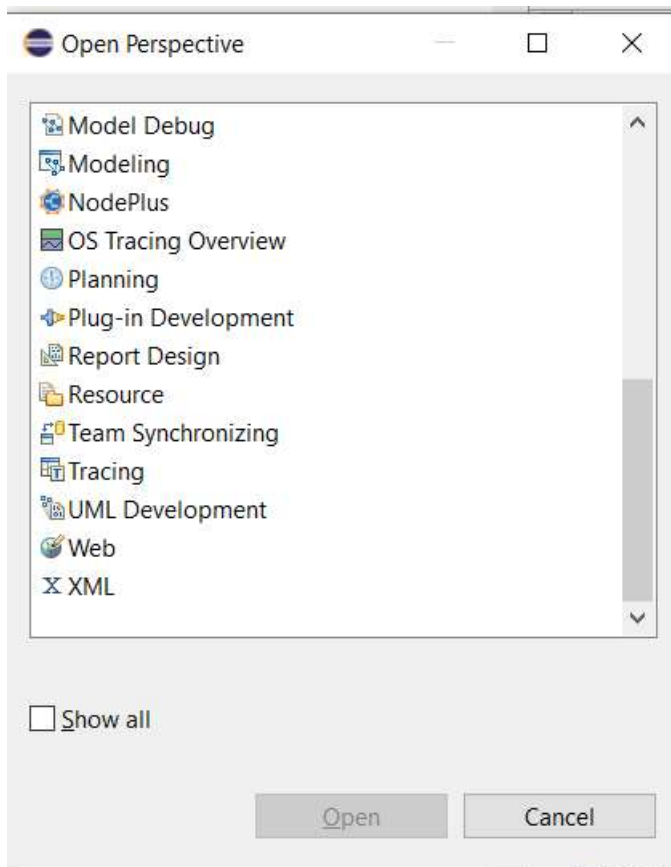
8. After the installation is completed, you will be asked to restart Eclipse. Answer **Restart Now**. You are not encouraged to use the product without first restarting Eclipse.



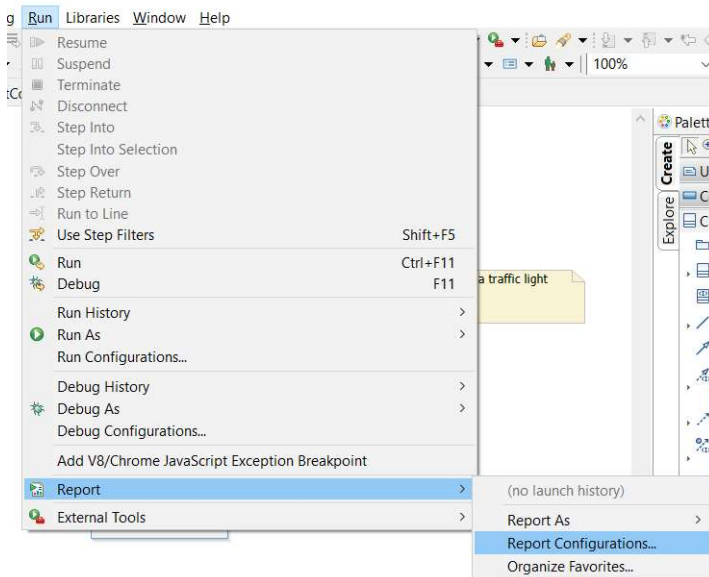
### 3 Verification

To verify the installation went correctly, consider the following.

1. After restart, invoke the **Open Perspective** selection dialog and check the **Report Design** perspective is available.



2. In the UML perspective the **Run** menu should contain **Report** menu item.



These steps ensure the BIRT installation was successful.